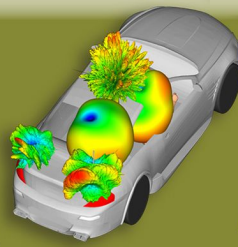


START YOUR CAREER IN RF & ANTENNA DESIGN WITH US!!

Why RF & Antenna Design?

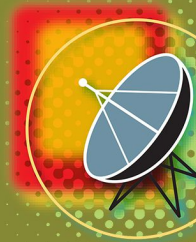
- Growing demand for high performance Antenna and RF Systems
- Growing RF Market with Emerging Technologies - Antenna and RF for IoT, 5G, Smart Automotive, Medical Electronics and more
- Growing demand for high end communication systems for Security, Surveillance
- Excellent career opportunities in RF and Antenna Design stream from - PSU's, Corporate Design Houses and more



IoT



Medical Electronics



Why Us?

- Start as Probationary Engineer
- Coaching from Industry experts
- Industry Standard Tools & Methodologies
- Exposure to analysis, simulation & prototyping
- Strong Industry connects
- PAN India presence
- Enabling all round growth

Eligibility Criteria:

- Final Year Students & Graduates
 - B.E/B.Tech from ECE/EEE
 - M.E/M.Tech in Communications Engineering
 - B.Sc/M.Sc in Electronics & Communications
- Grade: 60% / CGPA 7.0 & above

Duration: 4 Months

Location: Ahemadabad

Probationary Process



Screening



Probationary
Training



Project
Engineer

How to apply:

<https://entuple.com/probationary-program/rf>



An Initiative By:

ENTUPLE
TECHNOLOGIES